

ROBERTO PINEDA DUQUE

SINFONIA 1

EP784.2

P649 S1



**Instrumento:
CAJA Y TRIANGULO**

Baja
Triángulo

Robert Pineda Dupre

Sinfonia

Largo Solenne

13 21 36 47

3/2 8 || 2/2 4 || 3/2 8 || 2/2 15 || 3/2 11 || 2/2 6

55 *all. comodo* 71 83

ff

Baja 91 *Largo*

f

104 131 *Grave*

ff *Pin animato*

143 *Grave*

151 *Pin animato* 167 *Triángulo*

8

Handwritten musical score with measures 182-300. The score includes time signatures (3/2, 2/2, 4/2, 3/2, 2/2, 3/4, 2/4), dynamics (f, mf, ff), and performance instructions like "all: comodo" and "Largo".

Measures 182-210: 3/2 time, dynamics f, measures 8, 10, 2, 8, 8.

Measures 218-250: 2/2 time, dynamics f, measures 1, 7, 1, 5, 7, 2, 2.

Measures 262-275: 3/2 time, dynamics f, measures 2, 8, 4, 10.

Measures 291-300: 2/2 time, dynamics ff, measures 1, 5, 1, 3, 8, 11, 11. Marked "baja".

Scherzo II

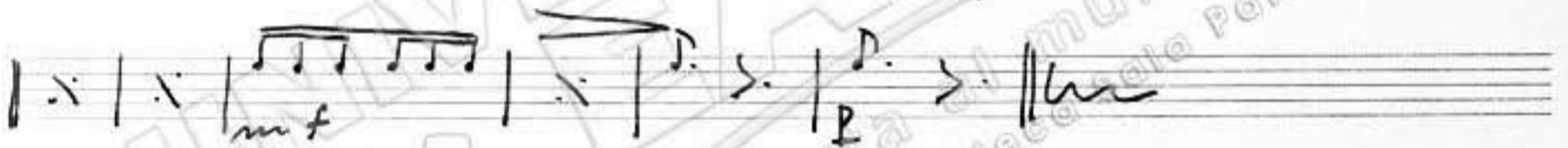
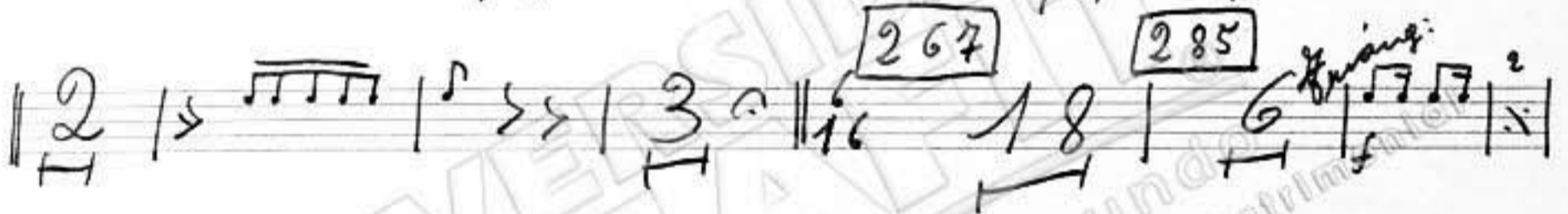
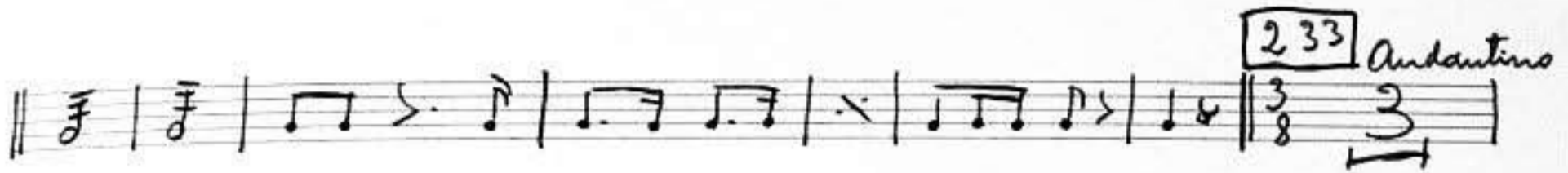
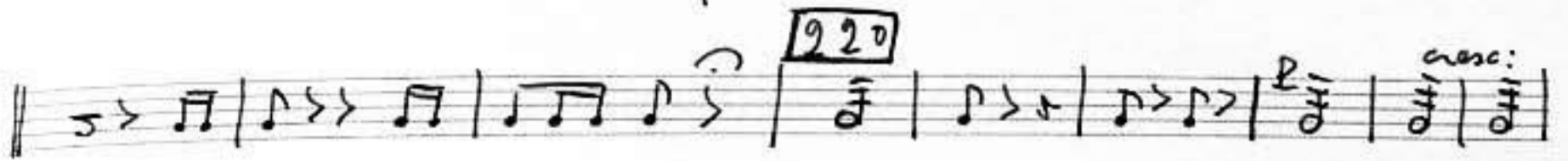
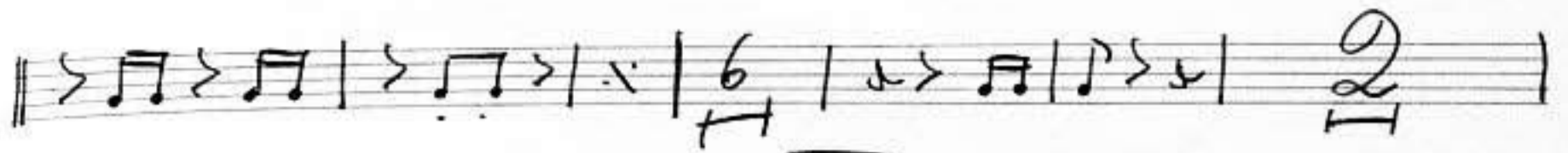
Handwritten musical score for Scherzo II, measures 37-199. The score includes time signatures (6/16, 3/8, 4/4, 3/8, 6/16, 3/4, 2/4, 3/4, 2/4, 3/4, 2/4, 3/4, 2/4), dynamics (ff), and performance instructions like "all: mod.".

Measures 37-61: 6/16 time, dynamics ff, measures 3, 6, 4, 16, 16, 2, 2.

Measures 83-136: 3/8 time, dynamics ff, measures 1, 4, 5, 2, 2, 1, 2, 3, 2.

Measures 168-180: 2/4 time, dynamics ff, measures 1, 3, 1, 2, 3, 1.

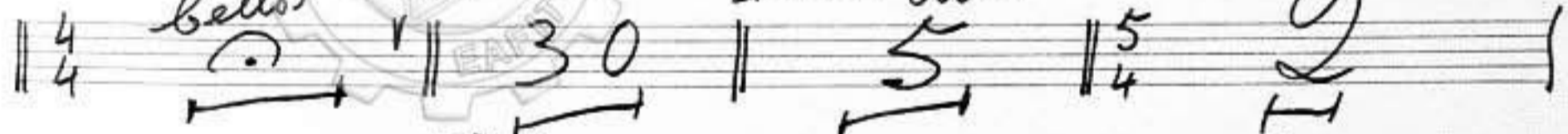
Measures 190-199: 2/4 time, dynamics ff, measures 3, 1, 2, 3, 1, 5.



Andante
bello

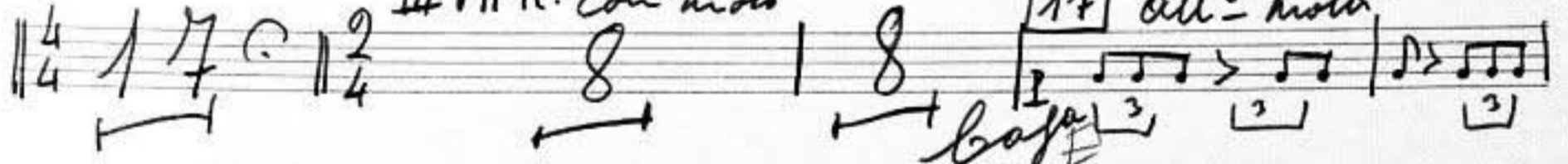
I VAR:

II VAR: all:

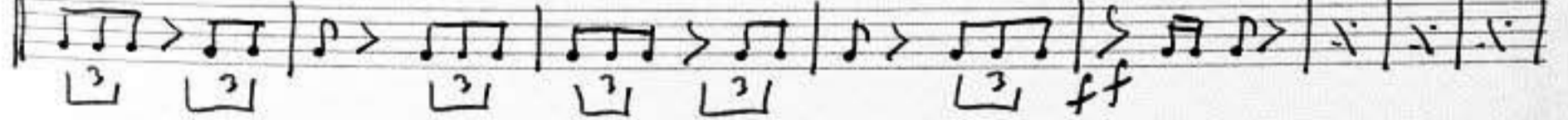


III VAR: con moto

17 all: molto



cresc:



IV VAR:

V VAR:

all to grazioso
ff
ff

final con moto

baja
ff

meno mosso
ff

andando
ff

meno mosso

Largo
ff
fff

ten

Robert Pineda Torres