

ROBERTO PINEDA DUQUE

CORAL Y GRAN FUGA

EP784.8

P649 GF

Instrumento:

BARITONO SOLO

Baritono Solo

R. Pineda Jaque

Coral y Gran fuga

adagio espressivo

Handwritten musical score for 'Coral y Gran fuga' in 2/4 time. The score consists of seven staves of music. The first staff begins with a *mf* dynamic. The second staff has a *f* dynamic. The third staff ends with a triplet of eighth notes. The fourth staff has a *f* dynamic. The fifth staff has a *mf* dynamic. The sixth staff has a *cresc.* marking and a *f* dynamic. The seventh staff ends with a double bar line and the instruction *D. b. al #*.

Coda || $\frac{2}{4}$ ||

Energico Gran fuga

Handwritten musical score for 'Gran fuga' in 2/4 time. The score consists of two staves of music. The first staff begins with a *f* dynamic and a *Stacc* marking. The second staff ends with a double bar line and a repeat sign.



Handwritten musical score for guitar, featuring ten staves of music. The score includes various annotations and section markers:

- Staff 2: Section marker (A) *mf*
- Staff 4: Section marker (B) *trio*, *rit.*
- Staff 5: Section marker (C)
- Staff 6: Section marker (D) *meno mosso*, *mf*
- Staff 8: Section marker (E)
- Staff 9: Section marker (F)
- Staff 10: *rall.*, *n.s.*

tro

Stacc

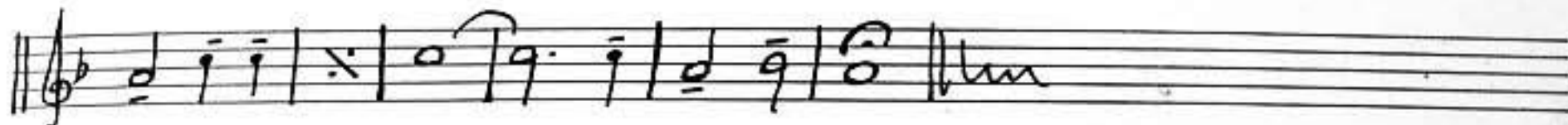
mf *f*

meno mosso *rally* *ff* *mf*

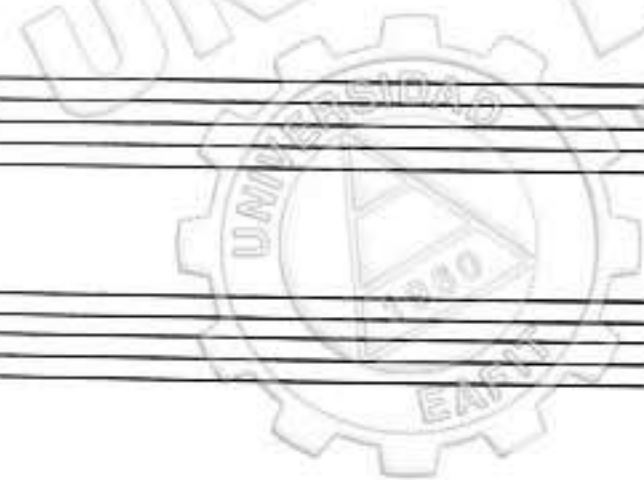
I ritenuto *Piu animato*

Largo f Solemne *ff*

The score is written on ten staves in a single system. It begins with a treble clef and a 2/4 time signature. The first staff has a 'tro' marking above it. The second staff has a 'Stacc' marking below it. The sixth staff has a circled 'G' above it and 'mf' below it. The seventh staff has a circled 'H' above it. The eighth staff has 'meno mosso' above it and 'rally' above it, with 'ff' and 'mf' dynamics below. The ninth staff has 'I ritenuto' above it and 'Piu animato' above it. The tenth staff has 'Largo f Solemne' above it and 'ff' below it. The piece concludes with a double bar line and a hatched ending block on the second staff.



Robert Pineda Dupue



Abierta al mundo
biblioteca sala patrimonial