

ROBERTO PINEDA DUQUE

CORAL Y GRAN FUGA

EP784.8

P649 GF

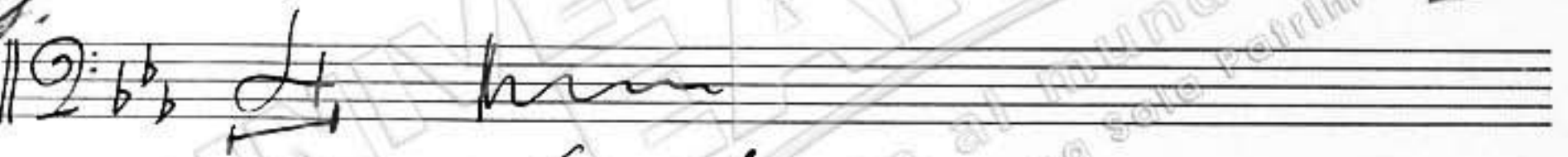
Instrumento:

TROMBON BAJO

Trombon bass

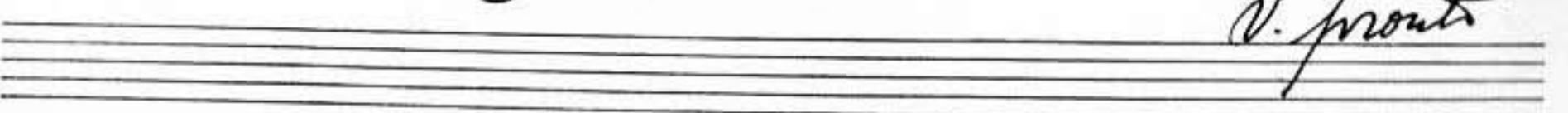
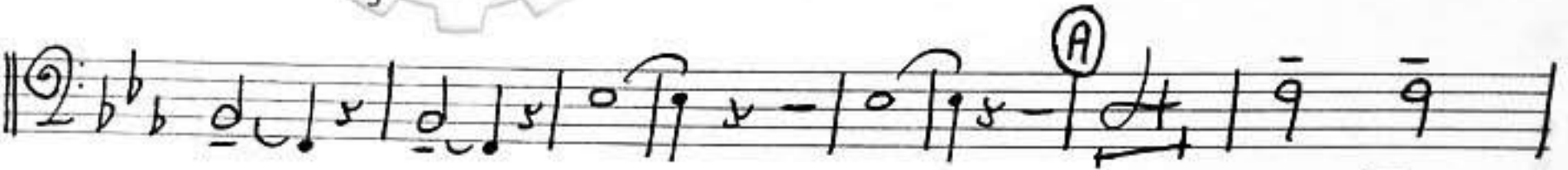
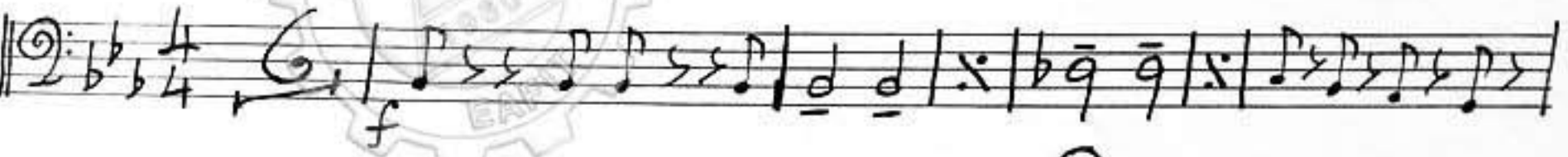
Coral y Gran fuga

Adagio espressivo



Gran fuga

Energico





Handwritten musical score for a piece in 2/4 time, featuring various dynamics and performance instructions. The score consists of 11 staves of music.

Key features and markings include:

- Staff 2:** Chordal markings **(E)** and **(F)**. Dynamics **f** and **stacc**.
- Staff 3:** Dynamic **mf** and performance instruction **rall**.
- Staff 4:** Performance instruction **tr**.
- Staff 5:** Performance instruction **meno mosso**.
- Staff 6:** Performance instructions **ritenuto** and **piu animato rit**. Dynamic **ff**.
- Staff 7:** Chordal marking **(G)**.
- Staff 8:** Chordal marking **(H)**.
- Staff 9:** Chordal marking **(I)**.

The score concludes with a double bar line and a fermata on the final note of the eleventh staff.