

ROBERTO PINEDA DUQUE

**CONCIERTO PARA PIANO Y
ORQUESTA**

**EP784.262
P649**

**Instrumento:
FAGOT 2**

Saxofon

R. Pineda Duque

Concierto

Para Piano y Orquesta

And: con moto

Handwritten musical notation on a single staff, starting with a treble clef and a common time signature. The notes are: F#4, G4, A4, Bb4, C5, D5, E5, F#5, G5, A5, B5, C6.

Handwritten musical notation on a single staff, starting with a treble clef and a common time signature. The notes are: F#4, G4, A4, Bb4, C5, D5, E5, F#5, G5, A5, B5, C6.

Handwritten musical notation on a single staff, starting with a treble clef and a common time signature. It includes circled numbers 1, 2, and 3 above the notes, and the word *tranquillo* written above the staff.

Handwritten musical notation on a single staff, starting with a treble clef and a common time signature. It includes the word *piu mosso* written above the staff.

Handwritten musical notation on a single staff, starting with a treble clef and a common time signature. It includes circled numbers 4 and 5 above the notes, and the words *meno mosso* written above the staff.

Handwritten musical notation on a single staff, starting with a treble clef and a common time signature. It includes the word *con moto* written below the staff.

Handwritten musical notation on a single staff, starting with a treble clef and a common time signature. It includes circled number 6 above the notes, and the words *piu animato* and *meno mosso* written below the staff.

Handwritten musical notation on a single staff, starting with a treble clef and a common time signature. It includes circled number 7 above the notes, and the word *Energico* written below the staff.

Handwritten musical notation on a single staff, starting with a treble clef and a common time signature. It includes the word *ff* written below the staff.

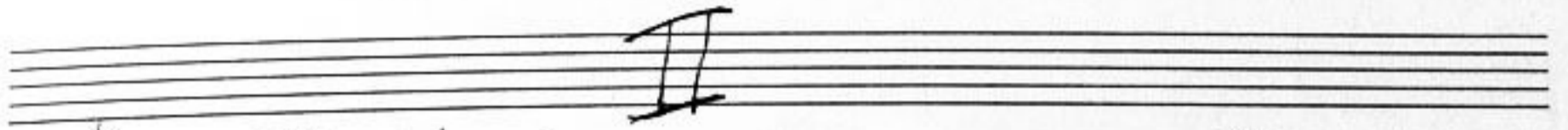
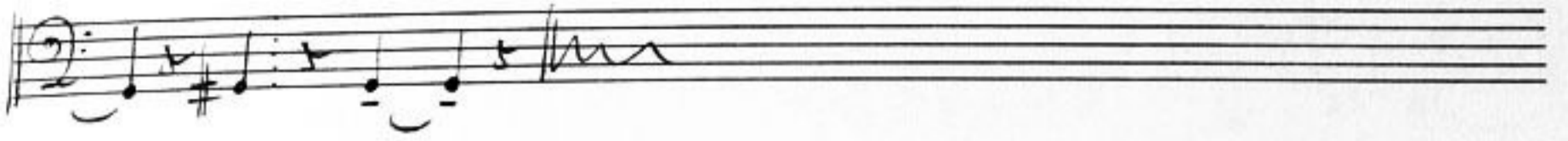
Piano Solo ⑧ *Con moto* ⑨ *And: con moto*

solce

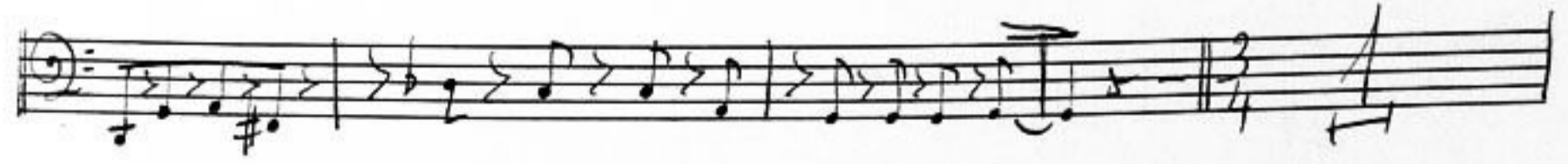
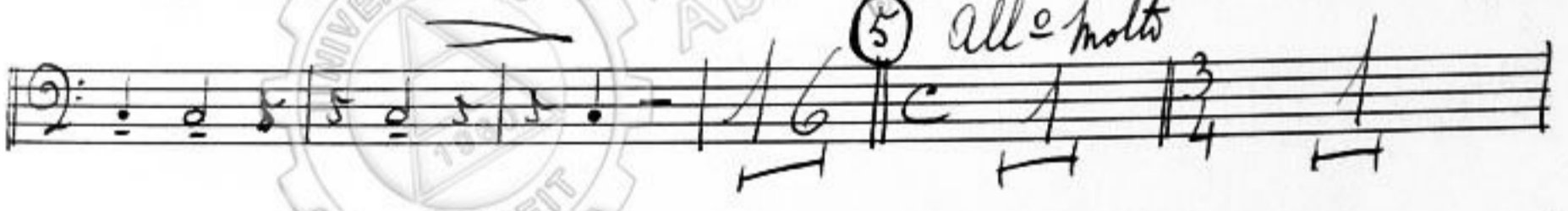
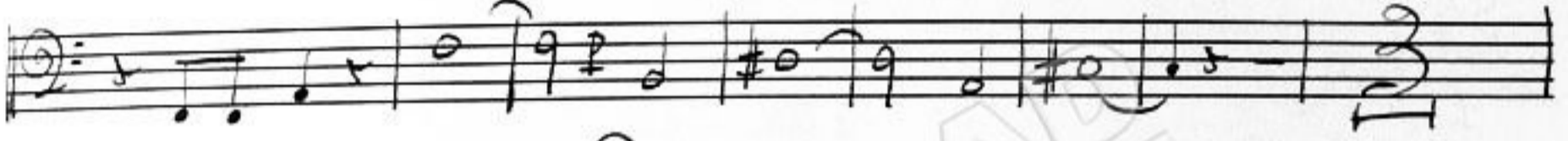
alleg:

⑪ *Energico*

⑫ *rit* ⑬ *Grandioso y Lentamente*



Tranquillo espressivo



pesante *Tranquillo* *allegro molto*

Meno mosso *Tranquillo*

dolce

10

III

All. mod. *Pin animato* *all. mod.*

1 2 3 4

movendo *resc.*

resc.

4 *12/8*

5

Vivo

Handwritten musical notation on a single staff, featuring a treble clef, a key signature of one sharp (F#), and a 2/4 time signature. The melody consists of eighth and quarter notes.

Handwritten musical notation on a single staff, continuing the melody from the previous staff with similar rhythmic patterns.

Handwritten musical notation on a single staff, showing a change in time signature to 3/4 and then 2/4.

Handwritten musical notation on a single staff, marked with circled numbers 6 and 7. It includes the tempo marking "Allo mod:" and "meno mosso".

Handwritten musical notation on a single staff, marked with circled number 8 and the tempo marking "tranquillo". It features a 3/8 time signature.

Handwritten musical notation on a single staff, marked with circled number 9 and the tempo marking "Piu animato". It includes the instruction "Composo y pesante".

Handwritten musical notation on a single staff, marked with circled number 10 and the tempo marking "alle".

Handwritten musical notation on a single staff, marked with circled number 11 and the tempo marking "animato". It includes the instruction "meno mosso".

Handwritten musical notation on a single staff, marked with circled number 12 and the tempo marking "Presto Vivace operto". It includes the instruction "Un poco piu mosso".

Handwritten musical notation on a single staff, marked with circled number 13 and the tempo marking "Un poco meno mosso".

Handwritten musical notation on a single staff, continuing the piece with various rhythmic values.

Handwritten musical notation on a single staff, concluding the piece with a final cadence.

14) *Piu animato*

Vivace

