

ROBERTO PINEDA DUQUE

**ORATORIO SACRO
"CRISTO EN LOS INFIERNOS"**

EP782.23

P649 CI

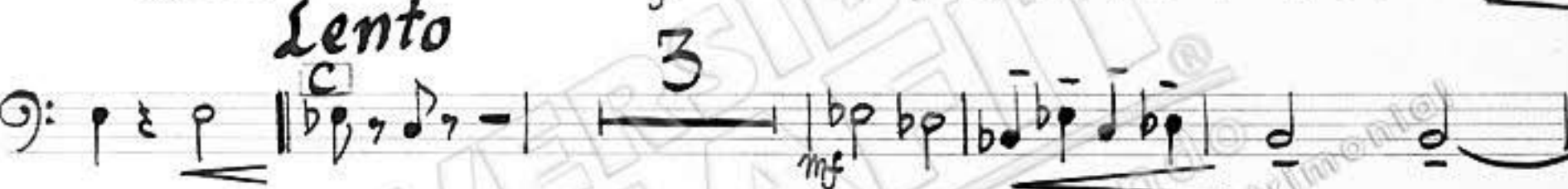
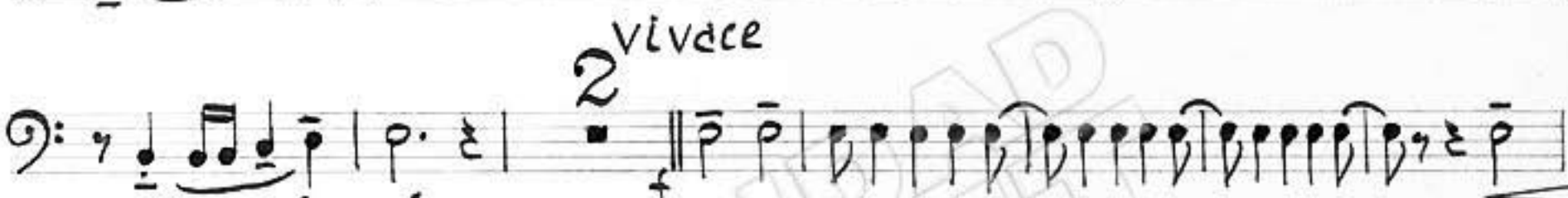
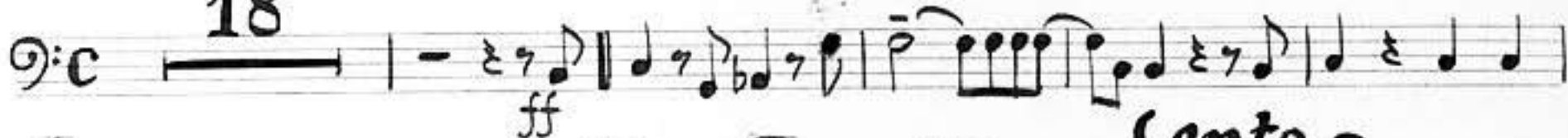
**Instrumento:
Trombon Bajo**



"No 6" Escena II

Moderato
18

Movido



"No 7 Tacet"

"No 8" Tacet"

"No 9" Tacet"

"No 10" Escena III

Moderato
12



"Nº 11"

Con fuoco
32

A 14 B 9 C 8

GRANDIOSO

"Nº 12"

Pesante

BARITONO

14 27

ff Alle comodo

Pesante

"Nº 13" Zacet

"Nº 14" Zacet

"Nº 15" Escena "IV" Zacet

"Nº 16" Zacet

Nº 17 "Zacet"

"No 18" Escena V "Zacet"

No 19"

Marcial
23

A Più Animato
3

First staff of music for No 19, starting with a 2/4 time signature and a 3-measure rest.

B

Second staff of music for No 19, featuring a 3-measure rest followed by a sequence of notes with fingerings 2, 3, 4.

Third staff of music for No 19, continuing the melodic line with various accidentals.

Largo

Fourth staff of music for No 19, marked 'Largo', featuring a 3-measure rest and a final note with a fermata.

No 20" "Zacet"

"No 21" "Zacet"

"No 22"

Solemne (sin correr)

14 Pesante

First staff of music for No 22, starting with a common time signature and a 14-measure rest, followed by a 3-measure rest.

"No 23" "Zacet"

"No 24"

Moderato

All^o

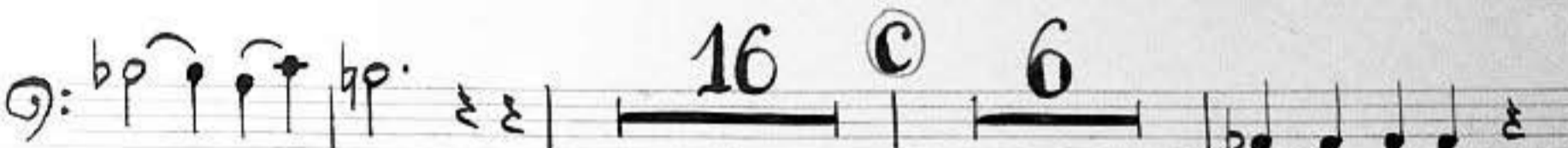
19

First staff of music for No 24, starting with a common time signature and a 19-measure rest, followed by a 9-measure rest.



"No. 25" Escena VI

Grave



"No. 26"

Allo Moderato (bien marcado)

