

ROBERTO PINEDA DUQUE

**ORATORIO SACRO
"CRISTO EN LOS INFIERNOS"**

EP782.23

P649 CI

Instrumento:

Viola

Viola

Oratorio Sacro

Version de Pablo Maria Dyaeta.

Musica de Robert Pineda Dague.

Nº 1 Escena I

Handwritten musical score for Viola, Opus 1, Scene I. The score is written on five staves. It begins with a treble clef, a common time signature (C), and a 'mod.' (moderato) marking. The first staff contains the main melodic line with various notes and rests. The second staff is for 'arco' (arco) with 'pizz' (pizzicato) markings. The third staff features a 'cresc.' (crescendo) marking and dynamic markings 'ff' and 'f'. The fourth staff has 'dim' (diminuendo) and 'Lento' markings. The fifth staff continues the melodic line with various dynamics and phrasing. A large watermark 'UNIVERSIDAD Abierta al mundo Biblioteca Sala Patrimonial' is visible across the score.

Nº 2

And: religioso

Un poco piu animato

Un poco mosso

And: religioso

Nº 3

Vivo

Vivo

Lento

mf

movido energetico

Nº 4

f

Handwritten musical score consisting of 10 staves. The notation includes various notes, rests, and dynamic markings such as *mf*, *pp*, *f*, and *cresc.*. There are also performance instructions like *rit.* and *Gargo*. A large watermark "UNIVERSITA' DI TORINO" is visible across the middle of the page.

Handwritten musical score consisting of 4 staves. The first staff begins with a large "no" and the tempo marking "And:". The notation includes notes, rests, and dynamic markings like *f*. A circled "A" is present in the first staff. The final staff ends with the instruction "Al. prout".

arco *allag:* *trp*

mf

ff

Piu animato

Deciso

Nº 6 Escena II

mod: *con expri:*

mf

f

Handwritten musical score for guitar, featuring various dynamics and articulations. The score is written on ten staves.

- Staff 1:** *f animando*, *Pizz*, *movido*, *arco*. Includes a circled letter **A**.
- Staff 2:** *Pizz*. Includes a circled letter **B**.
- Staff 3:** *pesante*, *animando*, *Pizz*. Includes a circled letter **B**.
- Staff 4:** *arco*.
- Staff 5:** *mf*, *mf*, *rit*, *Lento*.
- Staff 6:** *Vivace*, *Lento*. Includes a circled letter **C**.
- Staff 7:** *mf*, *f*.
- Staff 8:** *And: sost.*, *Pizz*.
- Staff 9:** *arco*.
- Staff 10:** *alco*, *P*.

The score includes various musical notations such as slurs, accents, and dynamic markings. A large handwritten number **5** is present at the bottom center of the page.

Pizz

Coro

And: risoluto

p

rit

meno mosso

Coro

mod:

n° 8

Handwritten musical score for the first system, consisting of three staves. The top staff begins with a treble clef, a key signature of one sharp (F#), and a 4/4 time signature. It contains several measures of music with notes, rests, and slurs. The second staff continues the melody with similar notation and includes dynamic markings such as *pp*, *pp*, *cresc:*, and *decresc:*. The third staff appears to be a lower register or accompaniment part, also with notes and slurs.

Escena III

Handwritten musical score for the second system, consisting of nine staves. The first staff is marked *No. 10* and begins with a treble clef, a key signature of one sharp (F#), and a 4/4 time signature. It includes dynamic markings like *mod:*, *pp*, *mf*, and *cresc:*. The second staff continues with *cresc:* and *mf*. The third staff has *arco* and *f* markings. The fourth staff is marked with a circled **A** and includes *cresc:* and *f*. The fifth staff has *proxi:* and *f*. The sixth staff is marked with a circled **B** and *arco*. The seventh and eighth staves continue the musical notation. The final staff concludes with a double bar line, a fermata, and the instruction *Al. Sique*.

Andante religioso

©

Handwritten musical notation for the first section, marked *Andante religioso*. It consists of three staves. The first staff begins with a circled 'C' and includes dynamic markings *mf* and *arco*. The music features a mix of eighth and sixteenth notes with various accidentals.

© *Allegro in mosso*

Handwritten musical notation for the second section, marked *Allegro in mosso*. It consists of three staves. The first staff begins with a circled 'D' and includes the dynamic marking *mf*. The tempo is noticeably faster than the first section, with more active rhythmic patterns.

Con fuoco

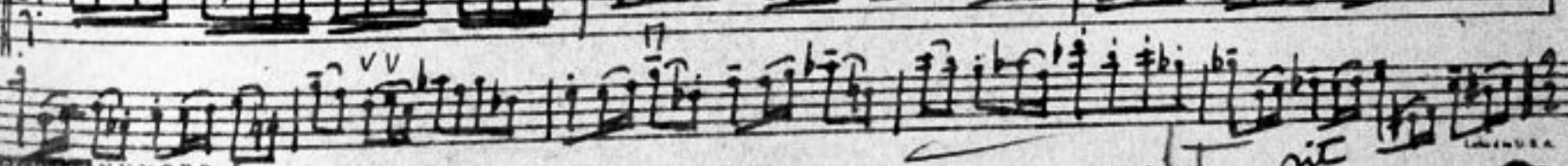
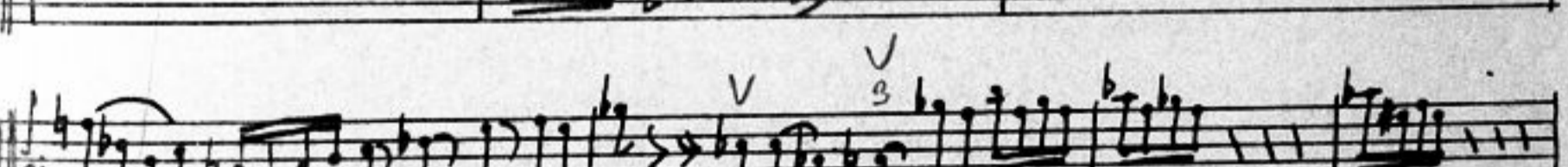
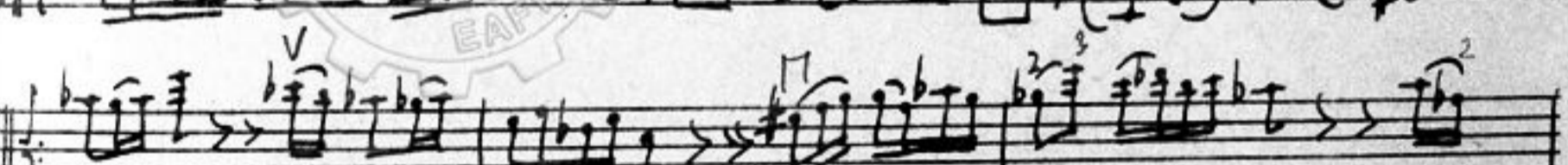
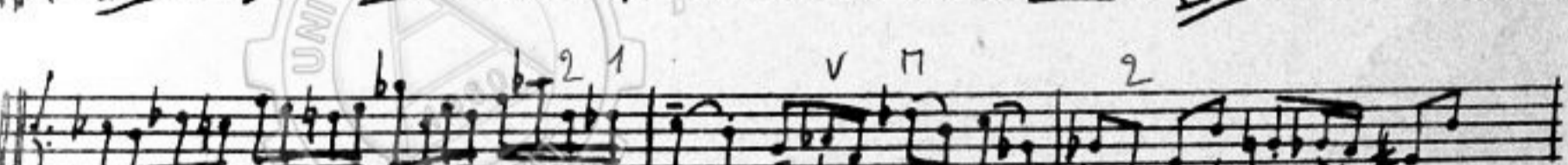
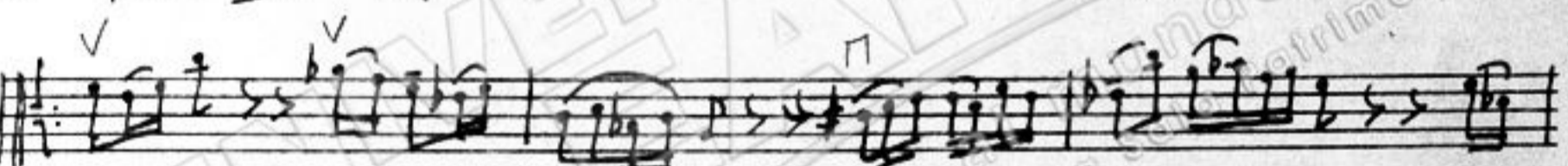
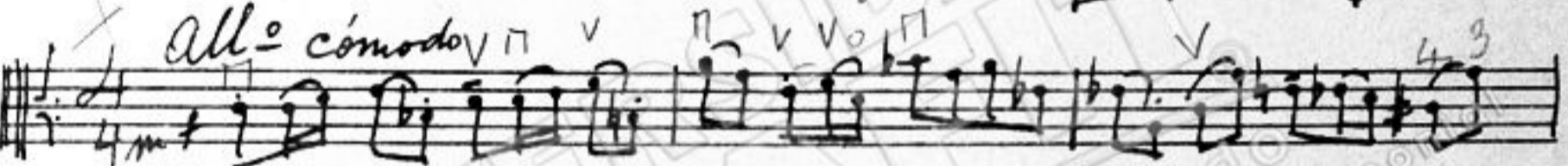
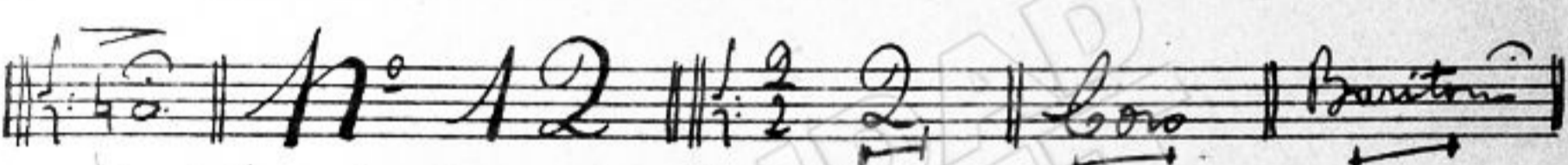
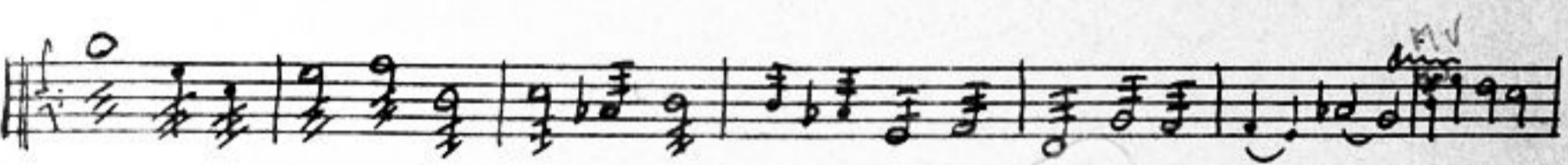
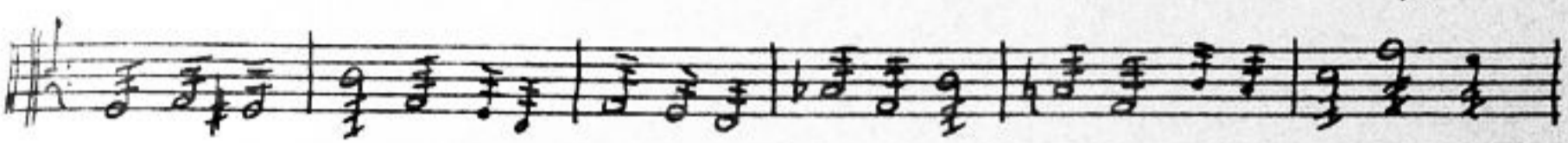
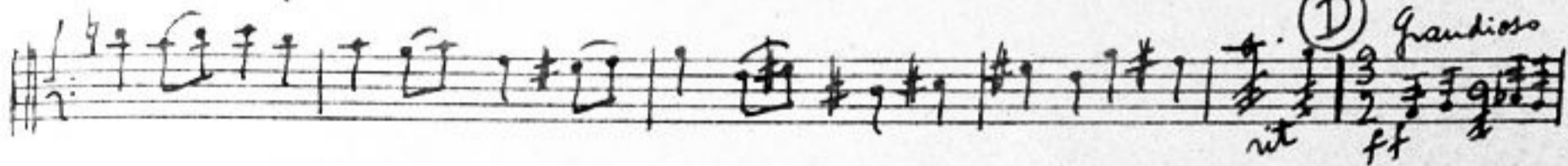
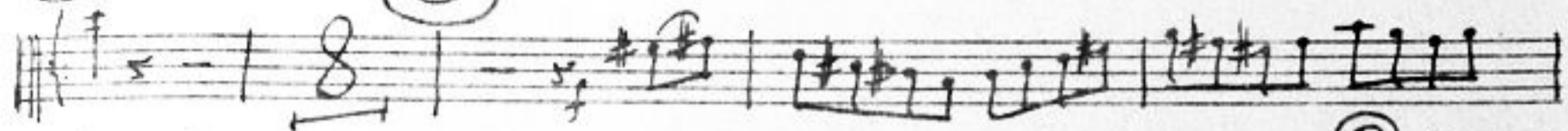
Handwritten musical notation for the third section, marked *Con fuoco*. It begins with a large 'no 11' and a double bar line. The first staff includes the numbers '13' and '3' below it. The music is very energetic, featuring many sixteenth notes and a strong rhythmic drive.

Ⓐ

Handwritten musical notation for the fourth section, marked with a circled 'A'. It consists of three staves. The first staff includes the dynamic marking *cresc.* and the first staff of the second section begins with a circled '2'. The music continues with a high level of intensity.

(P)

(C)



Coro | No 13 | Solistas y Coro

No 13 | Mod: Sost: | *mf cantando*

Musical staff with notes and rests.

Musical staff with notes and rests, marked with circled letter (A).

Musical staff with notes and rests.

Musical staff with notes and rests.

Musical staff with notes and rests, marked with circled letter (B).

Musical staff with notes and rests, marked with circled letter (C) and *rit*.

Musical staff with notes and rests.

Musical staff with notes and rests.

Musical staff with notes and rests.

N. Solo | Coro | Escena II | Mod: *expres:* | *Bri ni dat*

cresc: 17

dim

low

Escena I

Grave y marcial 2 3 4 5 6 7 8 9 10 11 12 13 14 15

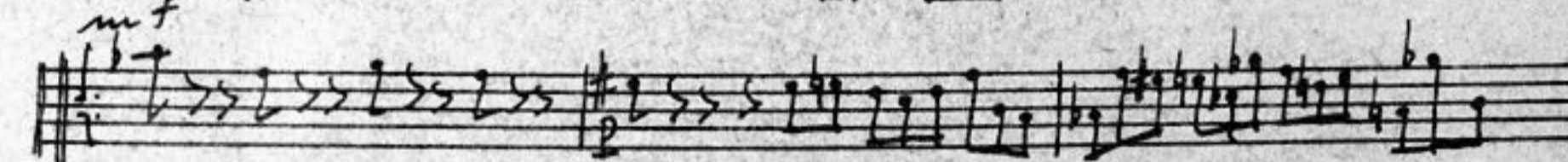
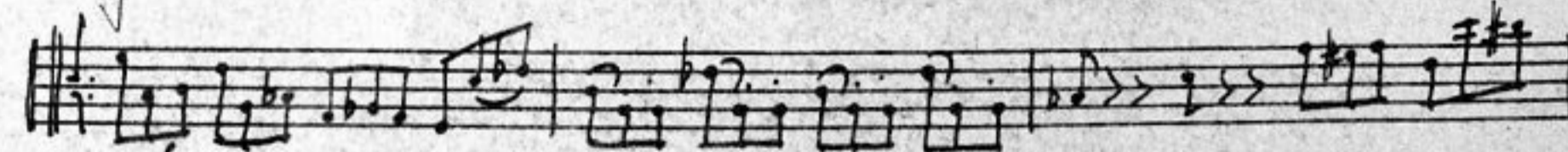
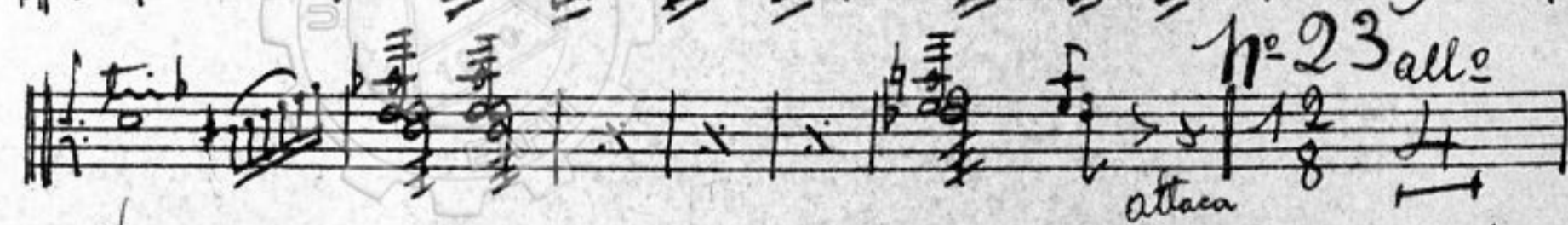
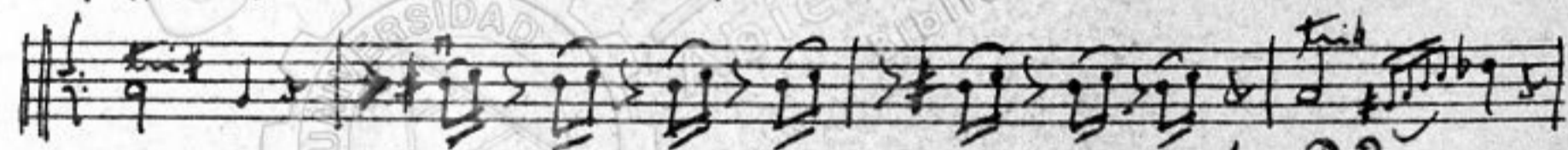
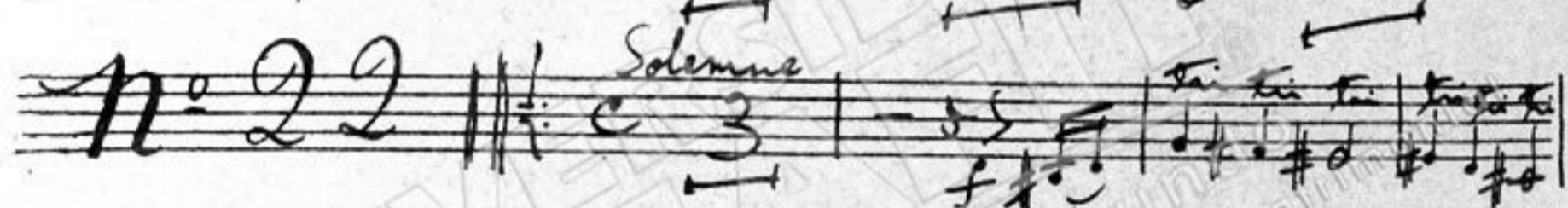
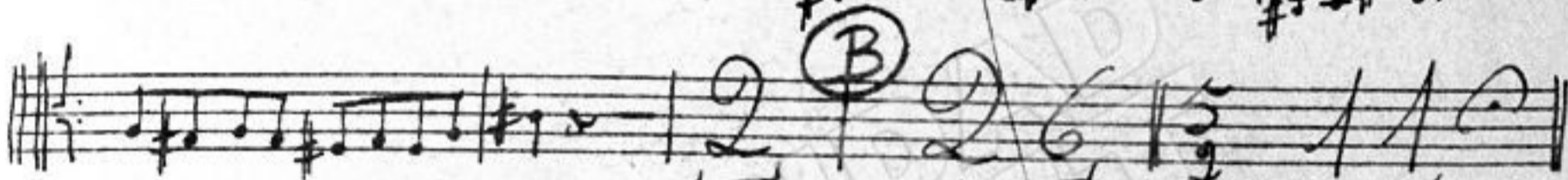
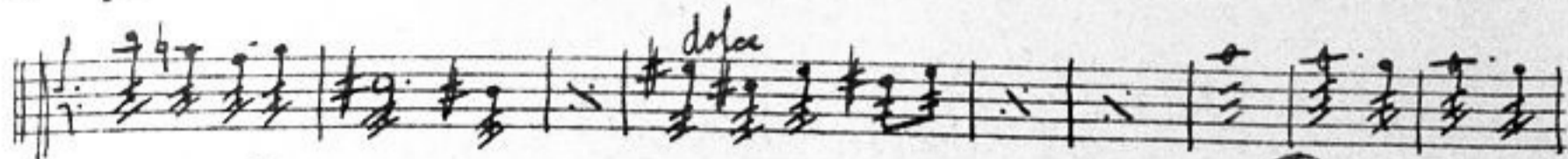
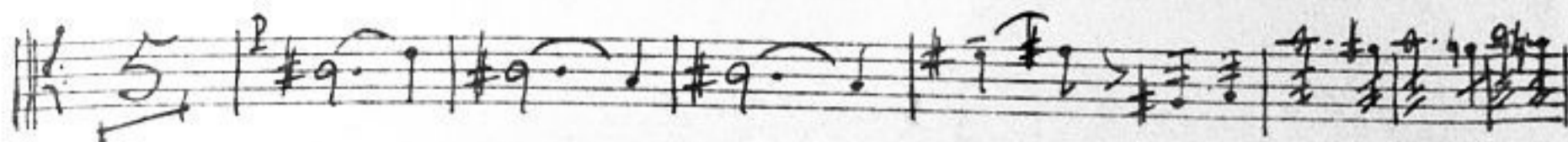
16 17 *f* *G.P.* *Nº 19* 2 3 4

(A) *Piu animato*

(B)

Nº 20 *Solenne* *attaca*

rit



Handwritten musical notation on ten staves. The notation includes various rhythmic values, accidentals, and dynamic markings. A large watermark is visible across the middle of the page.

No 2 *Mod:* *Andante*
Handwritten musical notation on three staves. The first staff begins with a double bar line and a common time signature. The second staff contains a series of notes with 's' markings below them. The third staff includes a time signature change to 4/8 and the marking *alle*.

Arcs
Handwritten musical notation on two staves. The first staff is marked *Arcs* and contains a melodic line. The second staff continues the notation with various rhythmic patterns.

Handwritten musical notation on one staff. The word *pronto* is written in a large, circled script at the end of the staff.

Handwritten musical score for three staves. The first two staves contain a melodic line with various ornaments and slurs. The third staff continues the melodic line and ends with a double bar line and a fermata.

Escena VI

grave

n.º 25

Handwritten musical score for ten staves. The first staff includes a key signature change to one flat and a time signature of 5/4. The score includes dynamic markings such as "cresc:", "animando", and "con fuoco". There are also circled letters "A" and "B" marking specific sections of the music.

Handwritten musical notation on a five-line staff. The first line contains a melodic line with various accidentals and dynamics including *rit* and *dim*. The second line features a bass line with circled chord symbols C, D, and E, and the instruction *mod:*. The third line continues the melodic line.

Handwritten musical notation on a five-line staff, continuing the melodic line from the previous staff.

Handwritten musical notation on a five-line staff. The first part of the staff contains the handwritten number **Nº 26**. The second part of the staff includes the tempo marking *All: mod: bien marcado* and a dynamic marking *f*.

Handwritten musical notation on a five-line staff, continuing the melodic line. A dynamic marking *mf* is present.

Handwritten musical notation on a five-line staff, continuing the melodic line.

Handwritten musical notation on a five-line staff. A circled letter **(A)** is written above the staff.

Handwritten musical notation on a five-line staff, continuing the melodic line.

Handwritten musical notation on a five-line staff, continuing the melodic line.

Handwritten musical notation on a five-line staff, continuing the melodic line.

Handwritten musical notation on a five-line staff. A circled letter **(B)** is written above the staff. The tempo marking *tr. marcato* is written below the staff, and *All. marcato* is written at the end of the staff.

Handwritten musical score consisting of ten staves. The notation includes various rhythmic values, accidentals, and dynamic markings. Key features include:

- Staff 2: *dim* marking above the staff.
- Staff 3: *mf* marking below the staff.
- Staff 4: *pp* marking below the staff.
- Staff 5: A circled letter 'D' and a *Largo* marking above the staff.
- Staff 6: A circled letter 'D' above the staff.
- Staff 7: A circled letter 'D' above the staff.
- Staff 8: A circled letter 'D' above the staff.
- Staff 9: A circled letter 'D' above the staff.
- Staff 10: A circled letter 'D' above the staff.

Robert Pineda
1961