

**ROBERTO PINEDA DUQUE**

**SINFONIA 1**

**EP784.2**

**P649 S1**



**Instrumento:  
TROMBON TENOR 1**

1ª Sinfonía.

Roberto Pineda Duque.

Largo Solemne.

I

8 4 13 8 21 11

mf Cresc. 36 dim. 9

47 6 55 Allº Cómodo 8 mf Cresc.

71 12 83 8 91 Largo mf

104 27 rit 131 Grave marcato ff

Piu animato 4

143 Grave ff Piu Animato

151 8

V.S.

8 *f*

167 **15** 182 *Largo marcato*  
*ff*

*And*

190 *Tranquillo*

202 **8** 210

*All<sup>o</sup> Cómico* *dim.* 218 **17**

235 **15** 250 **4**

*f*

262 **13** 275 *Largo*  
*ff*

291

# Grandioso

ff

300

mf

## "Scherzo."

### II

All<sup>o</sup> Moderato 1<sup>o</sup> Tempo

16 17 20 4 6 16 4

All<sup>o</sup> Moderato

f

61

f

Tranquillo

83 14 47 4

All<sup>o</sup> Moderato

Tempo

102 21 11 136 32 2 v.s.

# Con fuoco

32 *ff*

180

190 *ff* *p* *cresc.*

199 *f*

220

## Andantino

233 *f*

255 *f*

267 1º Tempo 18 285 14

## III

### Andante

### I VAR:

14 2 3 20 7 9

10 20 *f* *ff* *la*

*Resente*

**I- VAR**

*All<sup>o</sup>*

5 5 2 3 11 13

Con moto

**III- VAR**

*Molto All<sup>o</sup> Vivace*

8 9 17 6

ff

31 2

**IV- VAR**

*All<sup>o</sup> Gracioso*

6 7 20 27 9 36 12

**V- VAR**

*Con fuoco*

12 13 11 24 20

**"FINAL."**

16 17 16 33 16

49 63 10 73 Clar 13 86 9

Clar

95 2 3 4

ff

*Sordina sin Sordina*

103 2 3 4

mf f

111 SORD: 13 V.S.

SORD: 13 V.S.

"1ª Sinfonía."

"Largo Solemne."

I

"Roberto Pineda Duque."

8 4 13 8 21 11

mf cresc.

47 6 55 8

dim ALLE Còmodo

71 12 83 8 91 Largo

104 27 rit

131 Grave marcato

Più Animato 4 143 GRAVE.

Più Animato 151 8 v.s.

dob

8 *f*

167 **15** 182 *Largo Marcato*

*Animato*

190 *Tranquillo*

5 2 202 8 210 2

218 17 *dim*

235 *All<sup>o</sup> Cómicodo* 15 250 4

*la si la fa# la#*

262 **13** 275 4 *Largo*

291 1 2 1 2

# Grandioso

Musical score for 'Grandioso' in bass clef, 2/2 time signature. It features a series of notes with various accidentals (sharps, naturals, flats) and dynamic markings. The first measure is marked *ff*. A large slur covers measures 2 through 10. A second slur covers measures 11 through 14. The piece concludes with a double bar line and a 2/2 time signature. A dynamic marking of *mf* appears in the final measure.

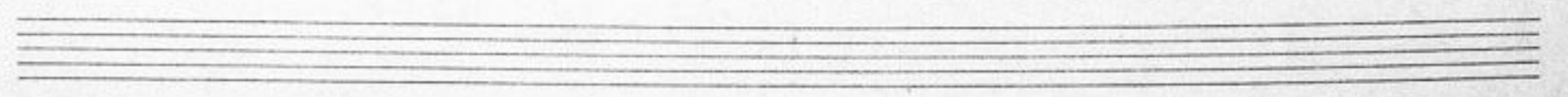
## "Scherzo."

### II

All<sup>o</sup> Moderato

1<sup>o</sup> Tempo

Musical score for 'Scherzo' in bass clef, 3/8 time signature. The score is divided into measures with various dynamics and tempo markings. Measure numbers 11, 16, 17, 20, 37, 61, 83, 102, 111, 136, and 197 are indicated. The piece starts with *All<sup>o</sup> Moderato* and includes a section marked *1<sup>o</sup> Tempo*. A *Violas* section is noted above measure 17. The score concludes with a double bar line and a 2/4 time signature, labeled *v.s.* (viva).



# Con fuoco

136 32 *ff*

180 1 3 1 3 1

190 3 1 *ff* *p* *cresc*

199 *f*

220 *Andantino*

233 8 *f*

255 11 267 18 285 14

1° Tempo

*Andante* III *Pesante* I: VAR

14 2 3 20 7 9

10 10 20 *Pesante* *f* *ff*

**I = VAR:**

ALL<sup>o</sup>

5 5 2 3 11 13

con fuoco

**III = VAR:**

Molto All<sup>o</sup> f Vivace

17 6

31

1

**IV = VAR:**

6 7 20 27 9 36 12

All<sup>o</sup> Gracioso

**V = VAR:**

12 13 11 24 20

**FINAL.**

con fuoco

16 17 16 33 16

49

14 63 10 73 13 86 9

95

2 3 4

103 2 (sordina) (Sin Sordina)

mf

111

Sordina 13

f

V.S.

