

ROBERTO PINEDA DUQUE

**ORATORIO SACRO
"CRISTO EN LOS INFIERNOS"**

EP782.23

P649 CI

**Instrumento:
Corno ingles**

Corno Inglés

Nº 1

Escena I "Roberto Pineda D."

"Oratorio Sacro"

Moderato

13

trun

trun

Lento

9

"Nº 2" "Tacet"

"Nº 3"

VIVO 6

mf

dim

pp

"Nº 4" "Tacet"

"Nº 5"

Andante

f

10

A

p

siempre p

7

v.s.

ALLAG. atpo

1

B con Slancia

Piu Animato

2

C Deciso

14

N° 6 "Escena II"

Moderato

8

tr mu

MOVIDO

mf

ff

A

8

mf

3

2 B 18

VIVACE

2

C Lento

Musical notation for the first system, including treble clef, key signature of one flat, and various rhythmic markings like slurs and repeat signs.

Musical notation for the second system, featuring a treble clef and a 3-measure rest.

"N^o 7" "Tacet"

"N^o 8" "Tacet"

"N^o 9"

Moderato

Musical notation for the third system, including a treble clef, a 10-measure rest, and dynamic markings like 'f', 'cresc.', and 'decresc.'

"N^o 10" Escena III"

Moderato

Musical notation for the fourth system, including a treble clef, a 17-measure rest, and section markers A and B.

Musical notation for the fifth system, including a treble clef, a 6-measure rest, and a 14-measure rest.

Musical notation for the sixth system, including a treble clef, a 20-measure rest, and a 35-measure rest.

C Andante religioso Un poco piu mosso

"N^o 11"

Con fuoco

Musical notation for the seventh system, including a treble clef, a 32-measure rest, and section markers A, B, and 9.

v.s.

GRANDIOSO

C 8 rit

rit
dim.

"No 12"

PESANTE

f **ff** **ALL^o Comodo** 27

BARITONO Solo 14. v BAR:

PESANTE

"No 13" Tacet

"No 14"

Moderato Sostenuto

17 **A** 16 **B** 4 (a2) **f** **C** 20

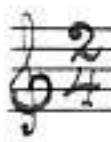
"No 15" Escena IV Tacet

"No 16" Tacet

"Nº 17" Tacet

"Nº 18 'Escena' V

Grove y Marcial



"Tacet"

(S=P)

"Nº 19"

Siempre Marcial

Piu Animato

23 **A** 9 **B** 2 3 4 4

"Nº 20" Tacet

"Nº 21"

Marcial Sin Correr

15

A

B

25

C

10

V.S.

"Nº 22"

Solemne (sin correr)

14 Pesante 3 2 3

"Nº 23" "Tacet"

"Nº 24"

Moderato

ALL^o

19 12 10

"Nº 25 Escena VI"

GRAVE

24

A

14

B

2

5 4

Ligero

7

22

E-MODERATO

21

